

SOMNIA

- Blackout fabric with subtle structured appearance
- Standard 100 by Oeko-Tex® certified, free from harmful substances

APPLICATIONS



FABRIC PROPERTIES

● Blackout

⌘ Polyester acrylic-coated

kg 445 g/m²

⊕ 0.70 mm

←max.→ 275 cm

⌘ 280 cm

FEATURES / TECHNICAL PROPERTIES

☀ 4-5

🔥 Flame retardant

⌘ Fabric must be turned

🌱 Oeko-Tex

🎨 Special colours from 1'000 m

WASHING INSTRUCTIONS






 -1.5% -0.75%

Iron only on the face (front) side!

FLAME RETARDANT

Class 1 (EN 13773)

Class 1 (UNI 8456)

NFPA 701

Type B (BS 5867-2)



Somnia
OPTICAL AND SOLAR COEFFICIENTS ($\pm 5\%$, DIN EN 410)

Colour	R_s	A_s	F_c	g_{tot}
1	66.2	33.8	0.50	0.36
2	66.2	33.8	0.50	0.36
3	66.2	33.8	0.50	0.36
4	66.2	33.8	0.50	0.36
10	70.4	29.6	0.47	0.34
12	70.4	29.6	0.47	0.34
13	70.4	29.6	0.47	0.34
15	70.4	29.6	0.47	0.34
16	70.4	29.6	0.47	0.34
18	62.6	37.4	0.52	0.37
20	62.6	37.4	0.52	0.37
21	62.6	37.4	0.52	0.37
22	70.4	29.6	0.47	0.34
23	66.2	33.8	0.50	0.36
24	62.6	37.4	0.52	0.37

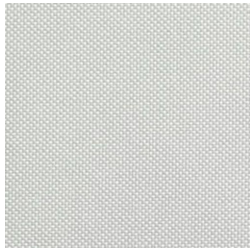
R_s Solar reflectance

A_s Solar absorption

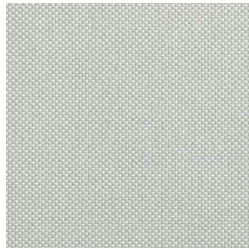
F_c Shading factor

g_{tot} Total g-value

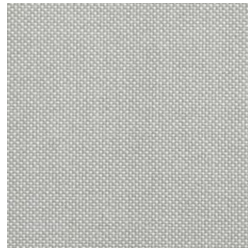
$F_c + g_{tot}$: Value calculated with glass: $0.72 / U_g = 1.6 \text{ W/m}^2 \text{ K}$, DIN EN 13363-1

Somnia

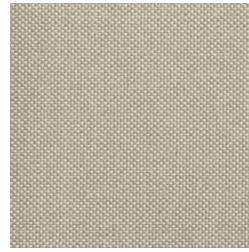
1



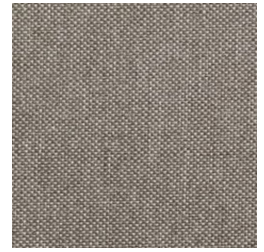
2



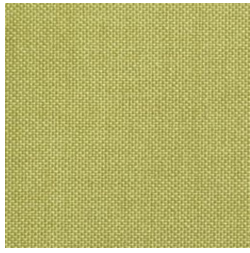
3



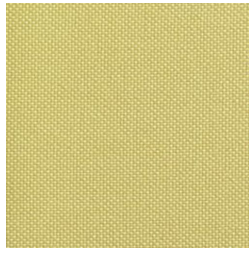
4



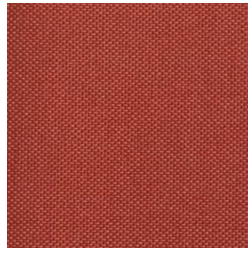
10



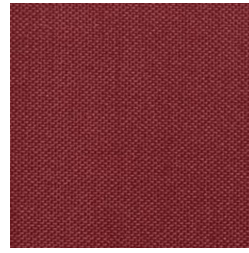
12



13



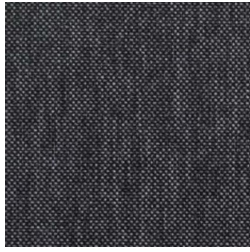
15



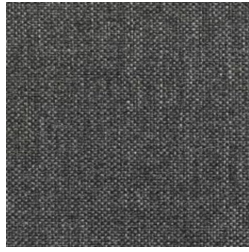
16



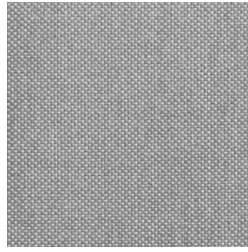
18



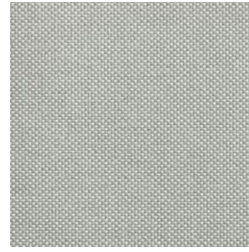
20



21



22



23



24

Colours shown are not binding